

## 1 Adding a Line Card

The Crisis EVC Master Station is supplied with at least one number Line Card. There are 2 lines per Line Card.

Before adding a Line Card, ensure that the Master Station is not powered. If the Master Station is powered, then power down the panel by removing the battery first followed by the mains.

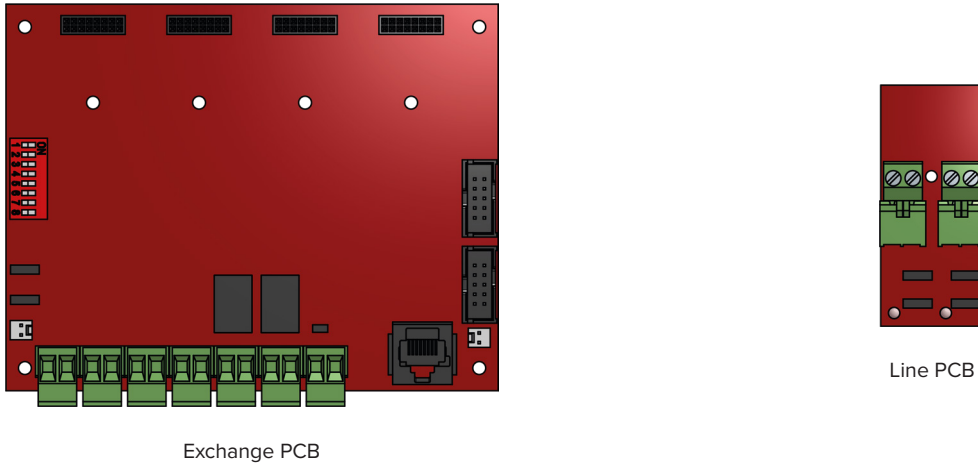


Figure 1: Exchange and Line PCB Diagram

To fit the Line Card:

1. Place Line Card in the next available space on the Exchange PCB (See diagram above) and secure using the supplied screw.
2. Remove a terminal from the Line Card for each outstation to be fitted.
3. Connect the supplied end-of-line 10kΩ resistor from the accessory pack then connect it to the outstation.
4. Connect the field wiring for the outstation to the terminal.
5. Push the terminal into the correct position on the Line Card.
6. Set the dipswitch on the Display PCB to enable Line Card monitoring.

Once the Line Card is securely fitted, power up the Crisis EVC Master Station be powered by connecting the mains first followed by the battery.

## 2 Removing a Line Card

Before removing a Line Card, ensure that the Master Station is not powered. If the Master Station is powered, then power down the panel by removing the battery first followed by the mains.

To remove the Line Card:

1. Remove all terminals from the Line Card that are wired to an outstation.
2. Remove the screw that can be found between the green connectors.
3. Remove Line Card from Exchange PCB, leaving the threaded spacer in the exchange PCB.
4. Set the dipswitch on the Display PCB to disable Line Card monitoring.

Once the Line Card has been removed, the Crisis EVC Master Station may be powered by connecting the mains first followed by the battery.